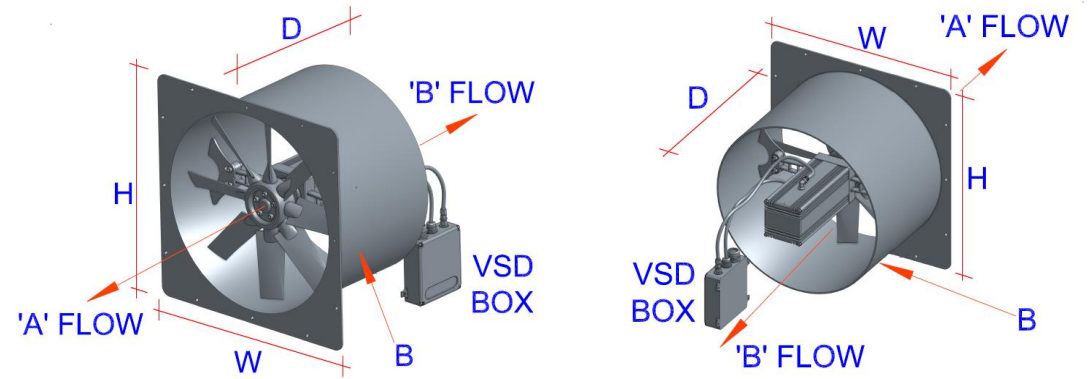


DC HIGH VOLUME ENGINE ROOM FANS

All DC high volume engine room fans come standard with:

- 🌀 Aluminium (5083 grade) housing powder coated to your required colour
- 🌀 Synthetic impeller with aluminium hub
- 🌀 Sealed marinated motor
- 🌀 DC Brushless motor
- 🌀 316 stainless steel fasteners
- 🌀 Bolt hole pattern to match other Marine air flow products
- 🌀 Install kit complete with everything to fit up to your vessel
- 🌀 Built in VSD “Air on demand system” standard
(Automatic fan speed controller driven directly from Engine room temperature)
- 🌀 Supplied with a full replacement 2 year warranty
- 🌀 Please note all export project are quoted in \$USD



MARINE AIR FLOW PART CODE	BODY (OD) "B"	FOOT PRINT "H W"	DEPTH "D"	VOLTS	AMPS @IDLE	AMPS @FULL	RPM @ IDLE	RPM @ FULL	DB @IDLE	DB @ FULL	AIR VOLUME @ IDLE Litres per sec	AIR VOLUME@ FULL Litres per sec	KG	COST
FANDC-HV-MF-1-24V-390/325/6-6	340mm	390mm	300mm	24V	2.5A	12A	1430	2040	68	78	750	1110	9.5KG	\$4450
FANDC-HV-MF-1-24V-490/425/6-6	440mm	490mm	300mm	24V	4A	20A	1305	2180	74	87	1270	2105	10.5KG	\$4600
FANDC-HVMF-3-24V-590/525/6-6	540mm	590mm	400mm	24V	14A	40A	1620	2400	81	94	2400	3410	17KG	\$5900

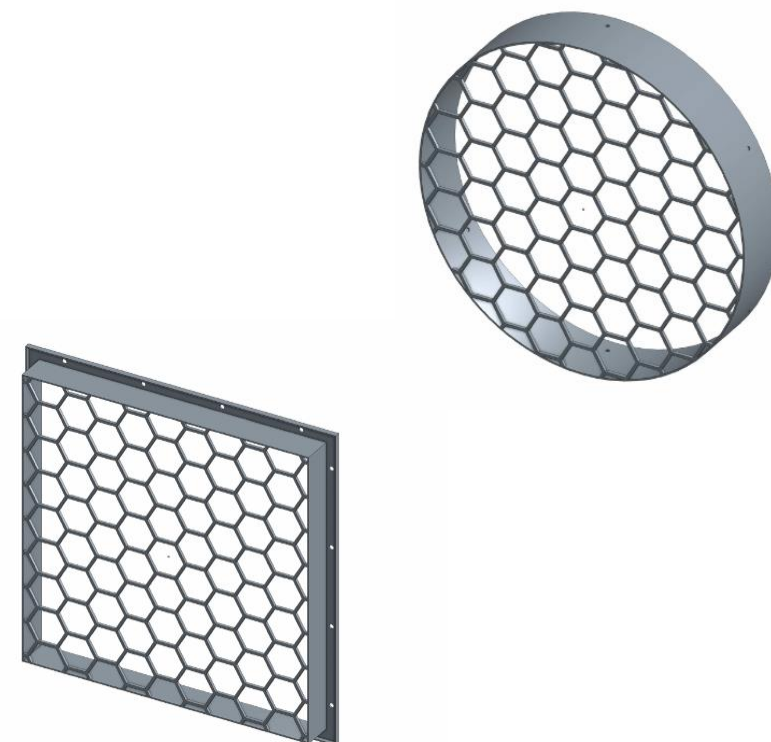
ACCESSORIES FOR AC/DC HIGH VOLUME FAN RANGE

Square and round finger grads:

- 🌀 Manufactured from Aluminium (5083 grade)
- 🌀 Available in all sizes
- 🌀 Powder coated to your required colour
- 🌀 316 stainless steel and nylon fasteners
- 🌀 Bolt hole pattern to match other Marine air flow products
- 🌀 Supplied with a full replacement 2 year warranty
- 🌀 **Please note all export project are quoted in \$USD**



MARINE AIR FLOW PART CODE	Combatable with	KG	COST
Part Code for Round: FG-340-RND Part Code for Square: FG-340-SQ	FANAC/390/325/3-6/35/0.75KW/1.1M3@150@86/2P FANAC/390/325/6-6/40/1.1KW/1.5M3@150@88/2P FANDC-HV-MF-1-24V-390/325/6-6	1kg	\$300
Part Code for Round: FG-440-RND Part Code for Square: FG-440-SQ	FANAC/490/425/8-8/45/0.75KW/1.5M3@150@85/4P FANAC/490/425/5-5/31.5/1.1KW/2.1M3@200@87/2P FANAC/490/425/4-8/40/2.2KW/3M3@250@93/2P FANDC-HV-MF-1-24V-490/425/6-6	1.5kg	\$330
Part Code for Round: FG-540-RND Part Code for Square: FG-540-SQ	FANAC/590/525/8-8/45/1.1KW/2.3M3@200@87/4P FANAC/590/525/5-5/35/2.2KW/4M3@200@92/2P FANDC-HVMF-3-24V-590/525/6-6	2.5kg	\$360
Part Code for Round: FG-768-RND Part Code for Square: FG-768-SQ	FANAC/850/750/6-9/35/2.2KW/6M3@150@90.7/4P	4kg	\$410



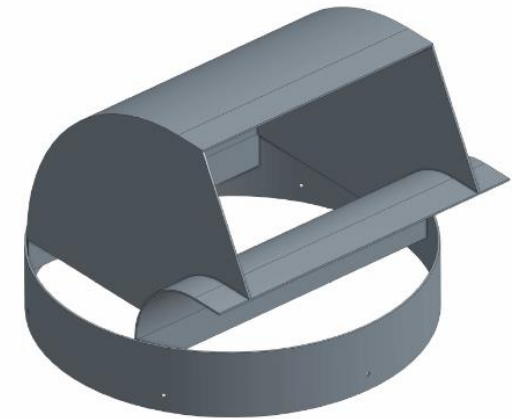
ACCESSORIES FOR AC/DC HIGH VOLUME FAN RANGE

Adjustable Air diverters:

- 🌀 Manufactured from Aluminium (5083 grade)
 - 🌀 Available in all sizes
 - 🌀 Powder coated to your required colour
 - 🌀 316 stainless steel and nylon fasteners
 - 🌀 Bolt hole pattern to match other Marine air flow products
 - 🌀 Supplied with a full replacement 2 year warranty
- 🌀 Please note all export project are quoted in \$USD



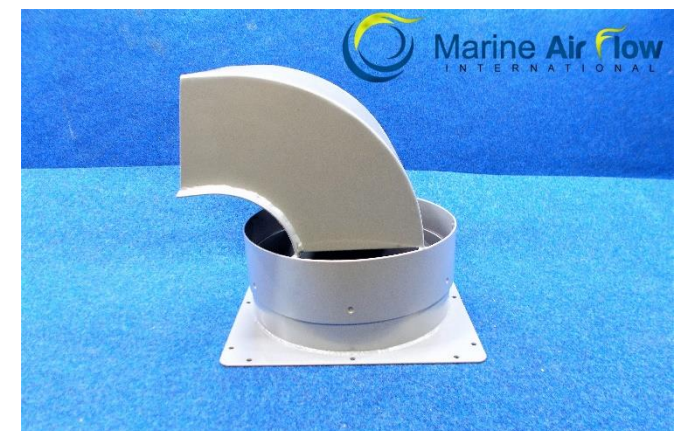
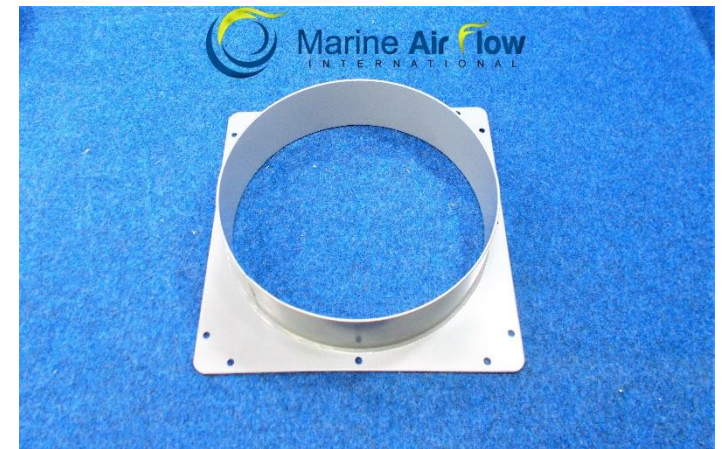
MARINE AIR FLOW PART CODE	Combatable with	KG	COST
DIV-340-RND	FANAC/390/325/3-6/35/0.75KW/1.1M3@150@86/2P FANAC/390/325/6-6/40/1.1KW/1.5M3@150@88/2P FANDC-HV-MF-1-24V-390/325/6-6	3kg	\$600
DIV-440-RND	FANAC/490/425/8-8/45/0.75KW/1.4M3@150@80/4P FANAC/490/425/5-5/31.5/1.1KW/2.1M3@200@87/2P FANAC/490/425/4-8/40/2.2KW/3M3@250@93/2P FANDC-HV-MF-1-24V-490/425/6-6	4.5kg	\$660
DIV-540-RND	FANAC/590/525/8-8/45/1.1KW/2.3M3@200@87/4P FANAC/590/525/5-5/35/2.2KW/4M3@200@92/2P FANDC-HVMF-3-24V-590/525/6-6	5.5kg	\$720
DIV-768-RND	FANAC/850/750/6-9/35/2.2KW/6M3@150@90.7/4P	10kg	\$820



ACCESSORIES FOR AC/DC HIGH VOLUME FAN RANGE

Adjustable Air diverters with Square flange adaptor:

- 🌀 Manufactured from Aluminium (5083 grade)
- 🌀 Available in all sizes
- 🌀 Powder coated to your required colour
- 🌀 316 stainless steel and nylon fasteners
- 🌀 Bolt hole pattern to match other Marine air flow products
- 🌀 Supplied with a full replacement 2 year warranty
- 🌀 **Please note all export project are quoted in \$USD**



MARINE AIR FLOW PART CODE	Combatable with	KG	COST
DIV-ADPT-390SQ-340RND	FANAC/390/325/3-6/35/0.75KW/1.1M3@150@86/2P FANAC/390/325/6-6/40/1.1KW/1.5M3@150@88/2P FANDC-HV-MF-1-24V-390/325/6-6	4.5kg	\$900
DIV-ADPT-490SQ-440RND	FANAC/490/425/8-8/45/0.75KW/1.4M3@150@80/4P FANAC/490/425/5-5/31.5/1.1KW/2.1M3@200@87/2P FANAC/490/425/4-8/40/2.2KW/3M3@250@93/2P FANDC-HV-MF-1-24V-490/425/6-6	6.5kg	\$990
DIV-ADPT-590SQ-540RND	FANAC/590/525/8-8/45/1.1KW/2.3M3@200@87/4P FANAC/590/525/5-5/35/2.2KW/4M3@200@92/2P FANDC-HVMF-3-24V-590/525/6-6	8kg	\$1080
DIV-ADPT-850SQ-768RND	FANAC/850/750/6-9/35/2.2KW/6M3@150@90.7/4P	15kg	\$1230